

## Mission Report 2009-10

Mara-Pasadena District Partnership



**Thanks** to Pasadena District Churches who participated in the Mara-Pasadena District Partnership in 2009 and 2010!

Chatsworth, Christus Kirche in Glendale, Church of the Foothills in Duarte, Pearblossom Community, Ridgecrest, San Gabriel, Temple City, Trona, Walnut, West Covina all contributed. The "Mara"-thon fundraiser, sponsored by the Church of the Foothills in Duarte, contributed \$2,026.

**Total donations**, plus Annual Conference offering: \$18,152.10.

**Note: Ridgecrest UMC gave \$13,510.52**

### How our offerings aided Christ's ministry in Mara District:

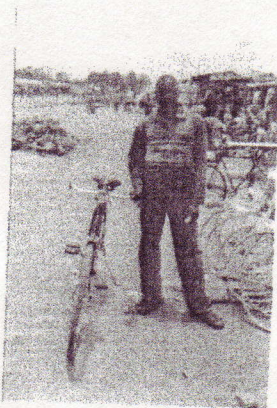
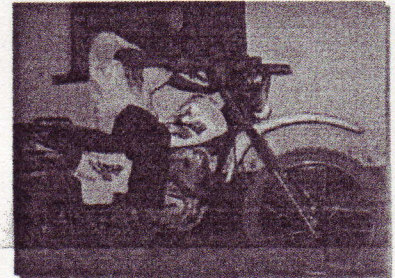
They bought 2 motorcycles and accessories, 4 bicycles, 35 Bibles, 34 Hymnals, 22 Sunday School books, 3 Sunday School drums.

They rented a house for 6 months and remodeled it for the Gerald-Preschool. For this, they bought 10 pieces of timber, 8 pieces of plywood, 1 bookshelf, 2 tables, 2 wooden chairs, 45 plastic chairs.

They ordered a handcrafted altar for the worship center, conducted one Gospel Crusade with 9 choirs, and a Youth Seminar. They gave salary support to the 4 circuit riders.

### Mark Your Calendar

Come to our 2011 Mara Event: Choir Festival in early October. Watch for more information as the year goes by.



#### Whom to Contact

Rev. Ilse Peetz  
Phone: 661-944-2842  
E-mail: [cipeetz@netzero.net](mailto:cipeetz@netzero.net)  
Pasadena District Office  
PO Box 1026  
Sierra Madre, CA 91025  
Phone: 626-355-2359  
Fax: 626-355-2912  
E-mail: [pasdist@earthlink.net](mailto:pasdist@earthlink.net)